

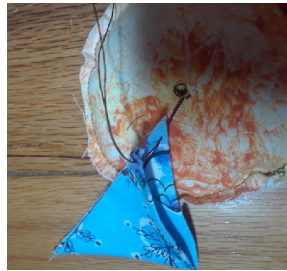
## Steps for making the pinwheel Christmas decoration:



Make 3.25" round pillow.



Make 16 prairie points (3.5" squares)



Stitch thru prairie point close to the double fold & raw edge point.



String all points in this same corner, making sure each finished edge overlaps the previous raw edge.



Pull stitched points together @ centre of cushion



Gather all 16 & tweak so the same lapping continues between first & last triangle



Adjust & even out points, then stitch thru middle to opposite side. Flip.



Stitch thru all points on opposite end of raw edge of prairie points



Gather all points into centre, fiddle to make 1st & last points sit right.



Knot ends of 9 to 10" hanger cord or ribbon



Thread cord in place at centre of each side of pinwheel



Attach buttons on each side with a couple of stitches.



Tie off. Great for decoration on the tree or on a gift.  
Merry Christmas! Happy Holidays!

