

FREE *Quilt Patterns*



Block 6

(1)

Cutting Directions



**Fabric #1 Cream/beige/white
prints**

**Cut
Print 1**

- 6 squares 2 1/2" x 2 1/2"



**Fabric #2 Red Prints
Cut - 18 total**

Print 1

- 3 squares 2 1/2" x 2 1/2"

Print 2

- 4 squares 2 1/2" x 2 1/2"

Print 3

- 3 squares 2 1/2" x 2 1/2"

Print 4

- 4 squares 2 1/2" x 2 1/2"

Print 5

- 4 squares 2 1/2" x 2 1/2"



**Fabric #3 Aqua Prints
Cut - 12 total**

Print 1

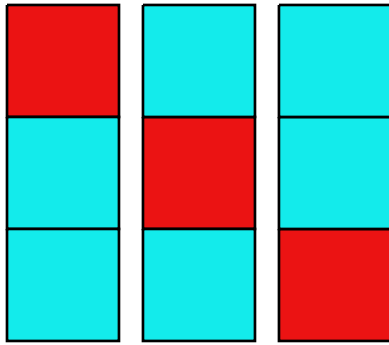
- 4 squares 2 1/2" x 2 1/2"

Print 2

- 4 squares 2 1/2" x 2 1/2"

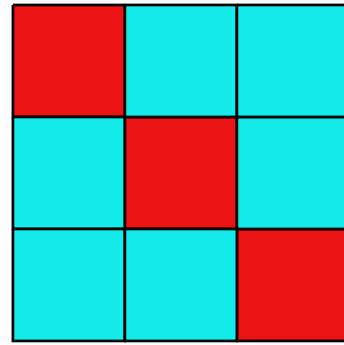
Print 3

- 4 squares 2 1/2" x 2 1/2"



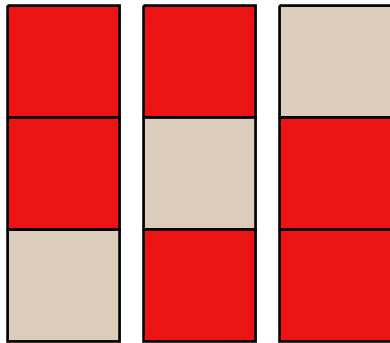
Step 1 Directions

1) Sew together 6 aqua and 3 red squares following the diagram



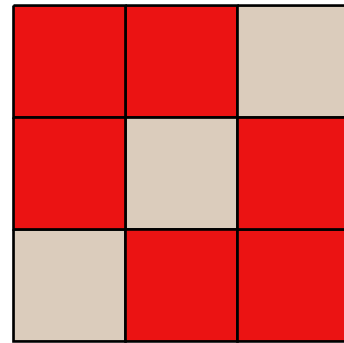
Step 2 Directions

1) Make 2



Step 3 Directions

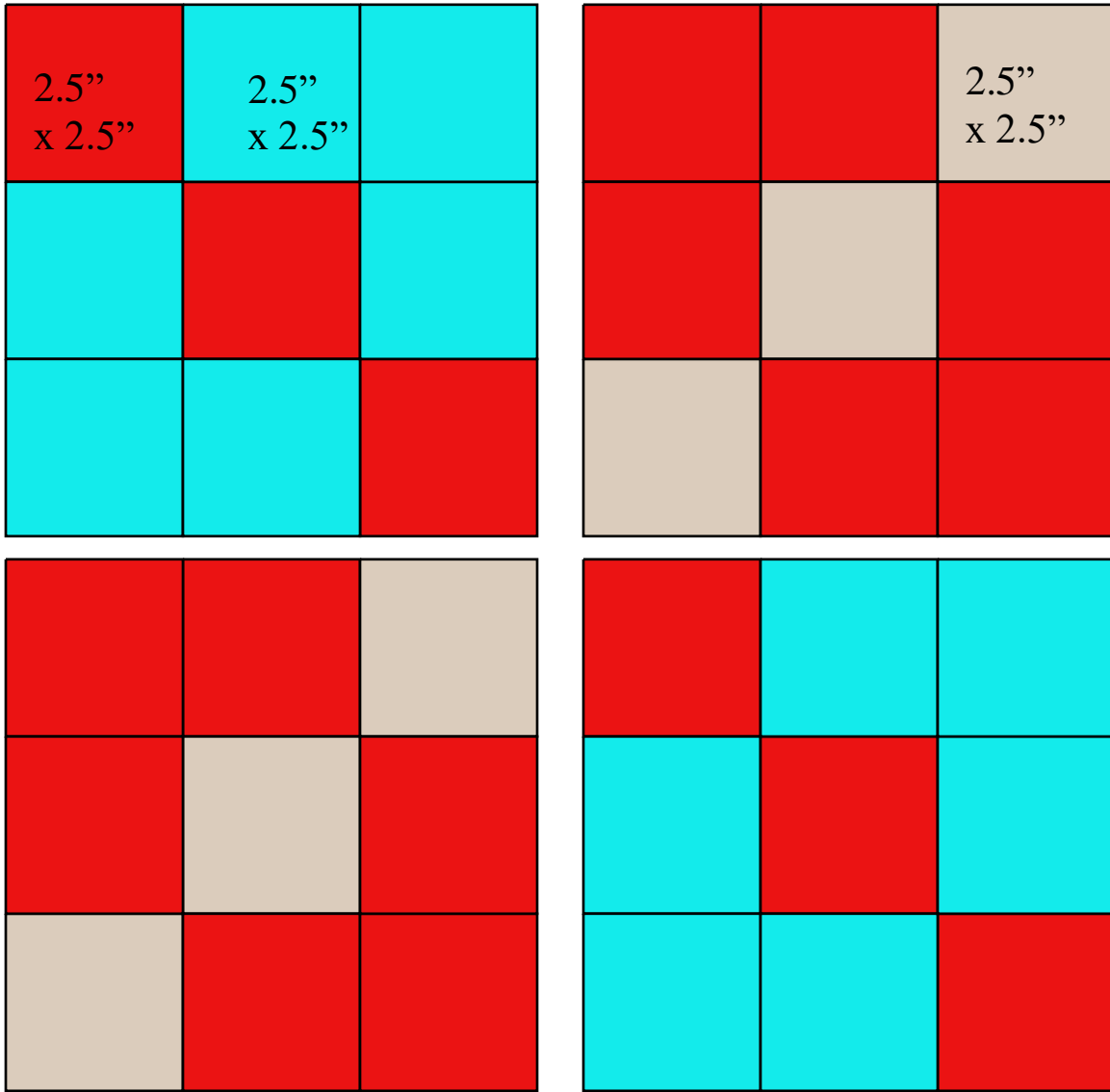
1) Sew together 6 red and 3 cream squares following the diagram



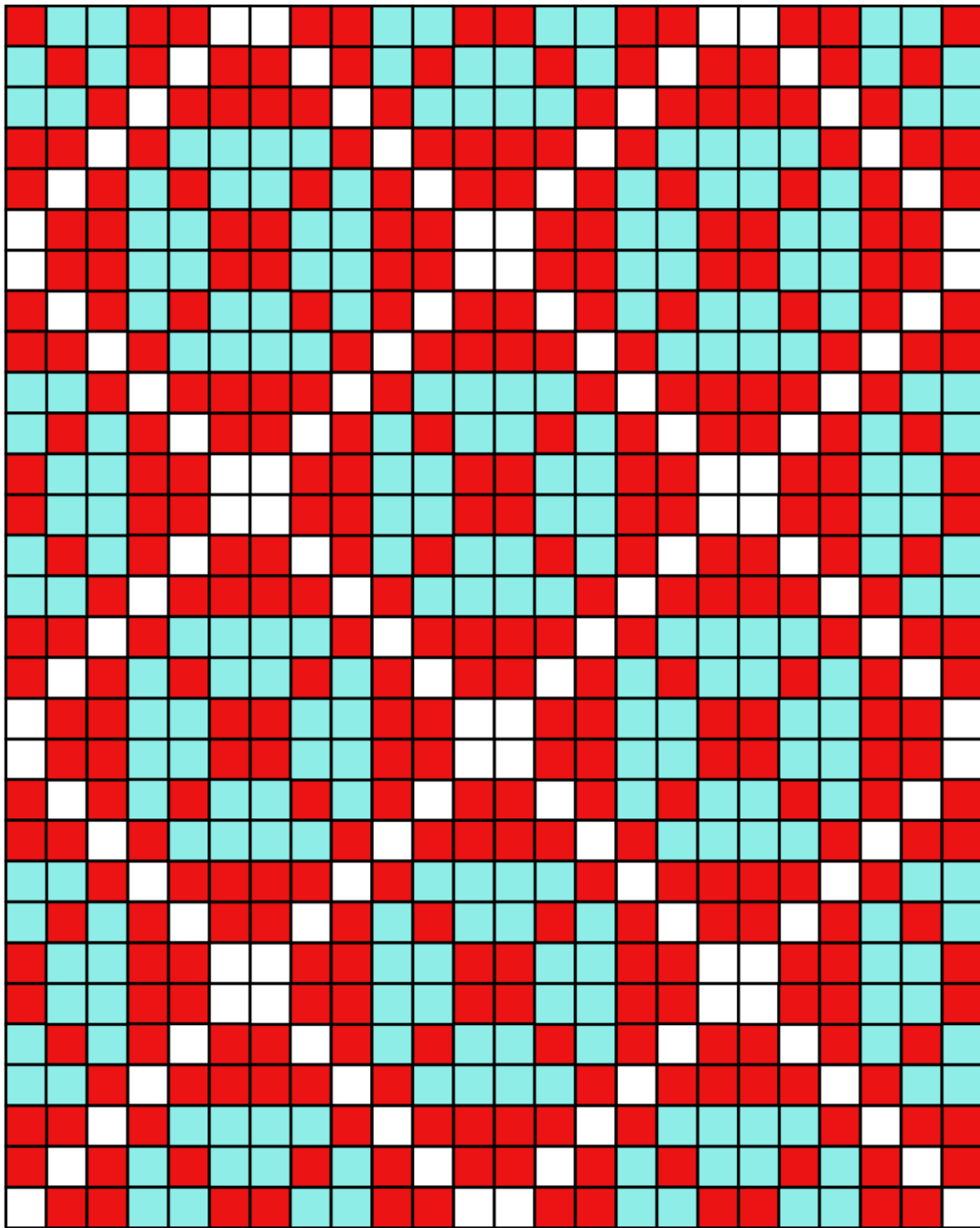
Step 4 Directions

1) Make 2 squares

Assemble



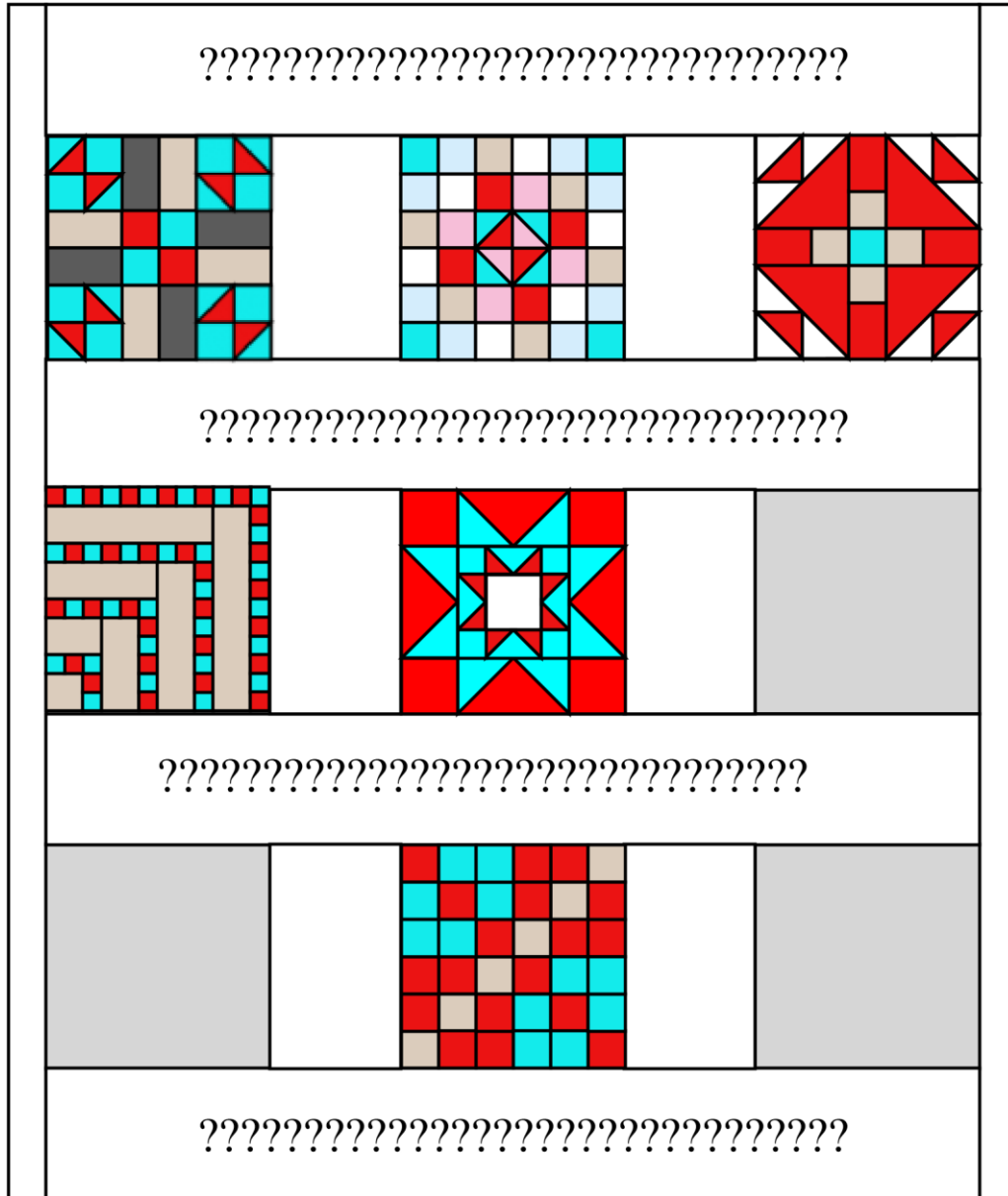
Trim Block to 12.5'' x 12.5'' Finished
Size 12'' in the quilt



20 blocks - 4 x 5 setting Finished Size 48" x 60"
Block 6 repeat

FREE *Quilt Patterns*

Mystery Quilt Layout



Final Quilt - 54" x 64"