

FREE *Quilt Patterns*



Block 2

Cutting Directions



Fabric #1 Cream/beige/white prints

Cut

Print 1

- 6 squares 2 1/2" x 2 1/2"

Print 2

- 6 squares 2 1/2" x 2 1/2"



Fabric #2 Red Prints

Cut

Print 1

- 4 squares 2 1/2" x 2 1/2"
- 1 squares 3" x 3" for HST

Print 2

- 4 squares 2 1/2" x 2 1/2"
- 1 squares 3" x 3" for HST



Fabric #3 Aqua Prints

Cut

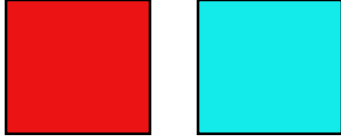
Print 1

- 4 squares 2 1/2" x 2 1/2"
- 2 squares 3" x 3" for HST

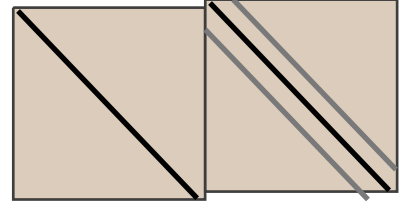
Print 2

- 8 squares 2 1/2" x 2 1/2"

Half Square Triangles Tutorial



- Using the red and aqua 3" squares,



Make 4 Half Square Triangle (HST) units

Step 1

Draw a line on the back of all the light squares

Step 2

Layer the dark and light square

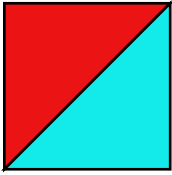
Sew a 1/4" seam on both sides of the drawn line

Step 3



Cut on the drawn line to create 2 HST

Step 4

-  Trim squares to 2.5" x 2.5" using a square ruler with a diagonal line placed on the Seam.

Make 4 HST

**See my Book
"Pat Sloan's Teach Me to Sew Triangles"
For Step by Step photos**

Directions

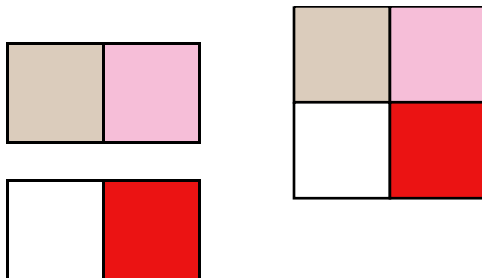
- 1) Take all 4 HST units sew following the diagram.

TIP press towards the Darker HST on Step 1

- 2) Sew the top the bottom unit, make 1

Make 4 units that measure 4 1/2" x 4 1/2"

Side 4-Patch

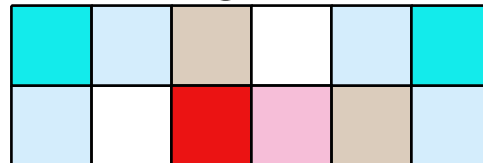


Directions

- 1) Sew the cream and red squares Following the diagram
- 2) Make 2.

Make 1 units that measure 4 1/2" x 4 1/2"

Rectangle Units

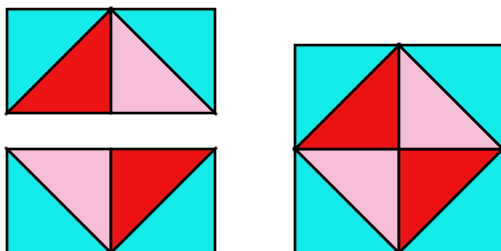


Directions

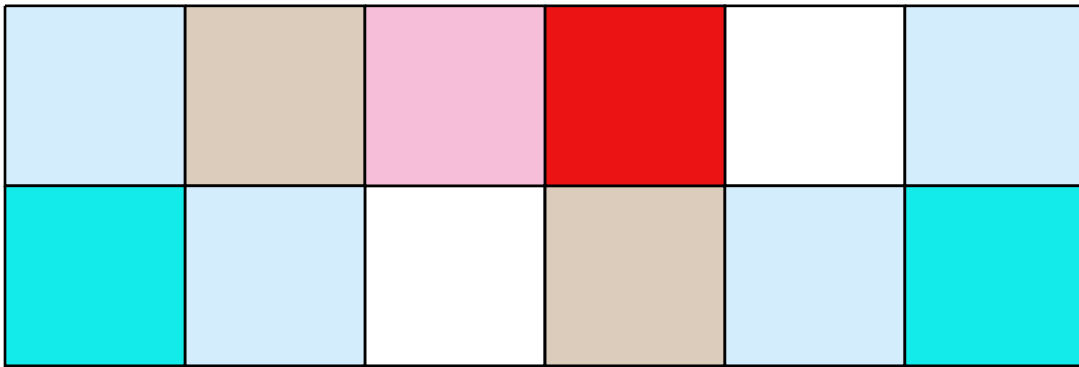
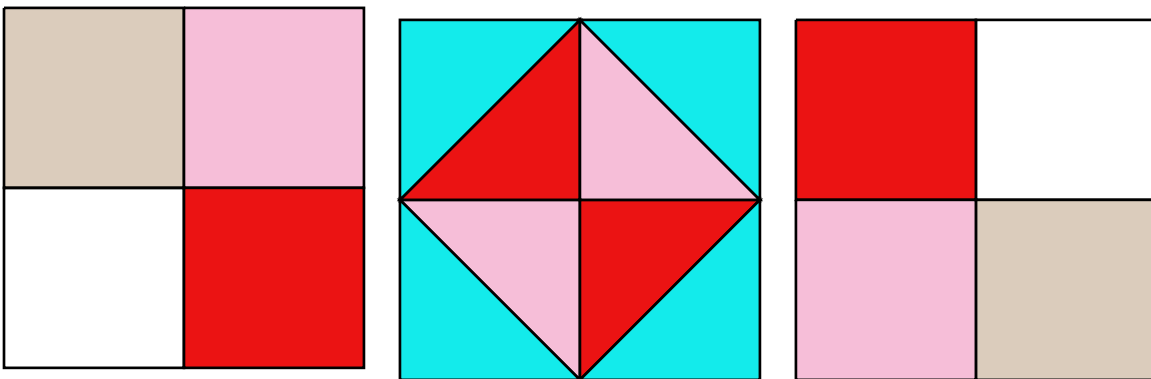
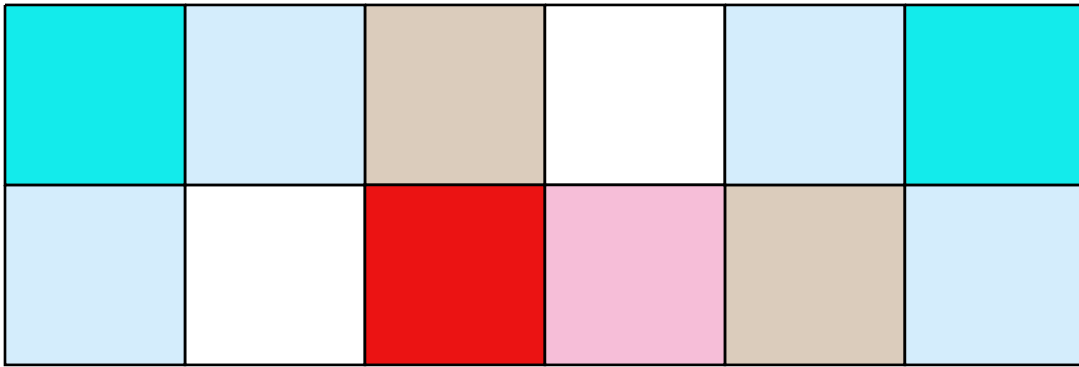
- 1) Sew the Aqua, cream, red squares Following the diagram
- 2) Make 2

Make 4 units that measure 4 1/2" x 12 1/2"

Center - HST Units



Assembly Diagram



Trim Block to 12.5" x 12.5" Finished Size 12" in the quilt